



KALEIDOS plus
powered by EyeRobo®

First and unique A.I. Based Vision Analyzer

Introduction



KALEIDOS plus is an A.I. based mobile vision analyzer that:

- Measures the objective refraction of both eyes at the same time
- Identifies possible phorias and tropias
- Detaches suspect abnormalities of the Anterior Segment

Areas of excellence:

- Refractive Errors
- Sight Anomalies
- Pupil Parameters
- Anterior Segment Screening

Why KALEIDOS plus



- FAST: Complete measurement in just 3 seconds
- FULLY AUTOMATIC AND EASY TO USE: No need of a specialized operator and user-friendly tablet application
- IMMEDIATE REFERRAL: A.I. based screening function of Anterior Segment
- MULTIFUNCTIONAL: Complete Objective Refraction - Amblyogenic Factor's Screening - Anterior Segment Anomalies Screening – Phorias and Tropias Detection
- PORTABLE: Suitable in any light condition and fully transportable
- DATA COLLECTION: Unlimited CLOUD storage

Powered by EyeROBO®

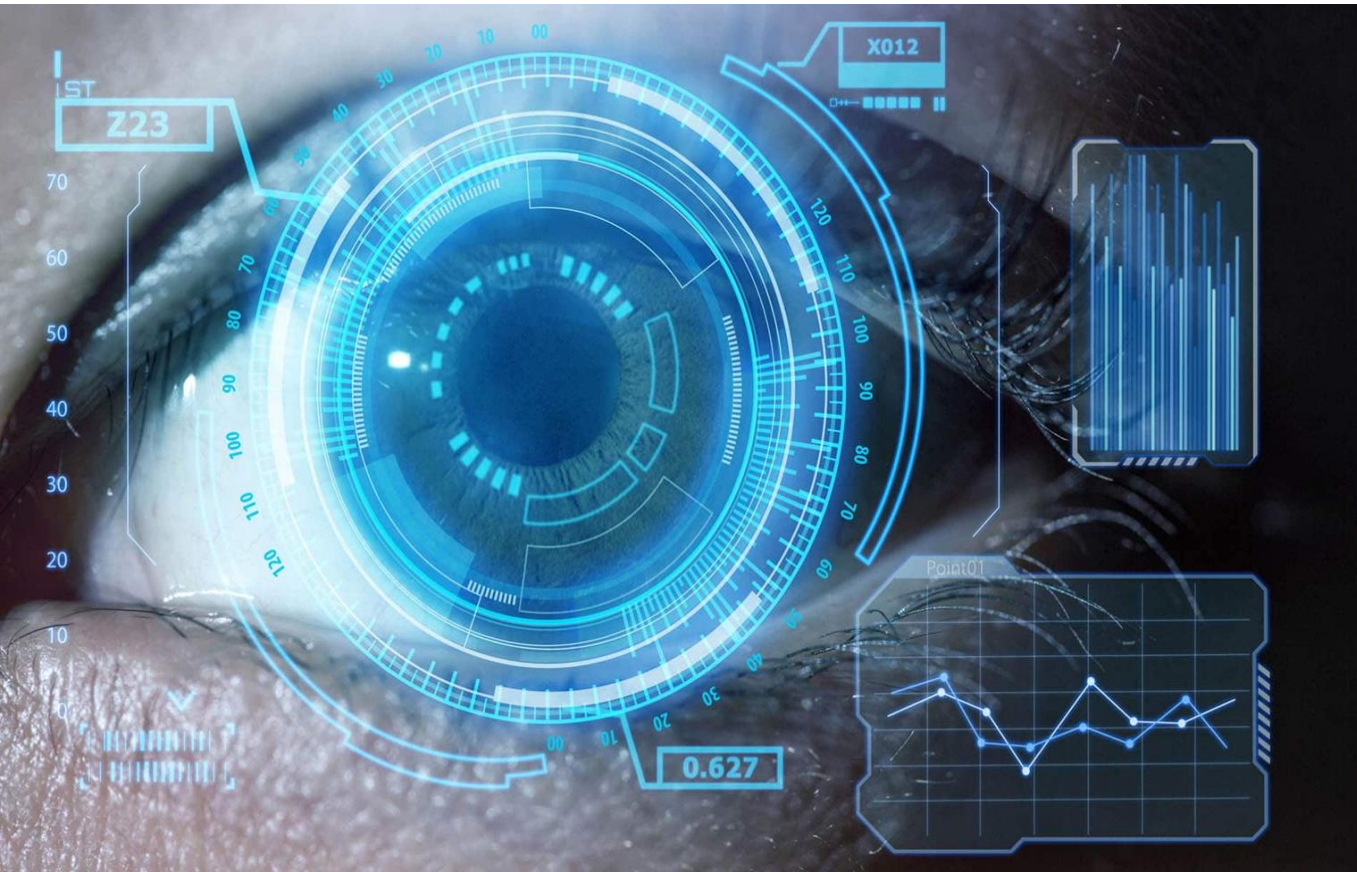


EyeROBO® is an innovative A.I. platform based on Adaptica's Cloud.

A.I. is the best solution to do examinations in a more efficient and costs effective way, making the highest quality health care services accessible to all.

EyeROBO® speeds up the detection of pathologies in screening projects and helps medical professionals in the early diagnosis of sight anomalies due to cataracts and keratoconus.

KALEIDOS Plus – Anterior Segment Screening function



The Anterior Segment Screening function is a complete AI system on the cloud for cataract and keratoconus screening.

The AI algorithm is based on a Convolutional Neural Network and it has been trained and validated on thousands of pupils.

KALEIDOS Plus – Anterior Segment Screening function



The pupils' images acquired by KALEIDOS Plus during the measurement are automatically stored on Adaptica Cloud as soon as the tablet is connected to a Wi-Fi network.

The AI algorithm processes the data instantly and, if any anomaly of the anterior segment is detected, a warning is given to the operator with the indication of the eye, if right and/or left.

KALEIDOS Plus – Front End (coming soon)

For everyone, everywhere



SignIn

Email address

We'll never share your email with anyone else.

Password

Check me out

Login

SignUp now

Name

Surname

Email

Password

Password Confirm

Create Account

KALEIDOS Plus - CR App



CR App provides information regarding the Corneal Reflexes position, giving hints about possible phorias and tropias.

CR-App allows to collect data from 3 measurements:

- Binocular
- Right eye (cover left eye)
- Left eye (cover right eye)

KALEIDOS Plus is provided with an infrared occluder to perform the cover tests.

KALEIDOS Plus - EMR



KALEIDOS Plus provides EMR integration through shared folder.

The shared folder allows to input patient data from your EMR directly to KALEIDOS Plus.

Once the measurement is completed, the exam data and exam report are automatically synchronized with your EMR.



Thank you!

adaptica.com
support@adaptica.com

